

recycling-urban social groups

We work with groups of recyclers of Urban Solid Waste,

developing a technology from the use of garbage as raw material.

This product adds added value to the garbage that they sell in bulk.

They know how to produce a new technology in order to use it for

themselves or sell it as a construction element.

Recycled Plastic Basketry Pieces



Basket makers from northern Córdoba taught recyclers from the city of Córdoba to weave with the traditional basket technique. Spun PET plastic bottles are similar to palm fronds prepared for weaving.



Recycled Plastic Basketry Pieces

Recycled Plastic Basketry Pieces





Recycled Plastic Basketry Pieces



Experimenting With Fabric For Large Surfaces

Some of the pieces woven
in caranday palm were
reproduced in recycled plastic



Experimenting With Fabric For Large Surfaces



Experimenting With Fabric For Large Surfaces



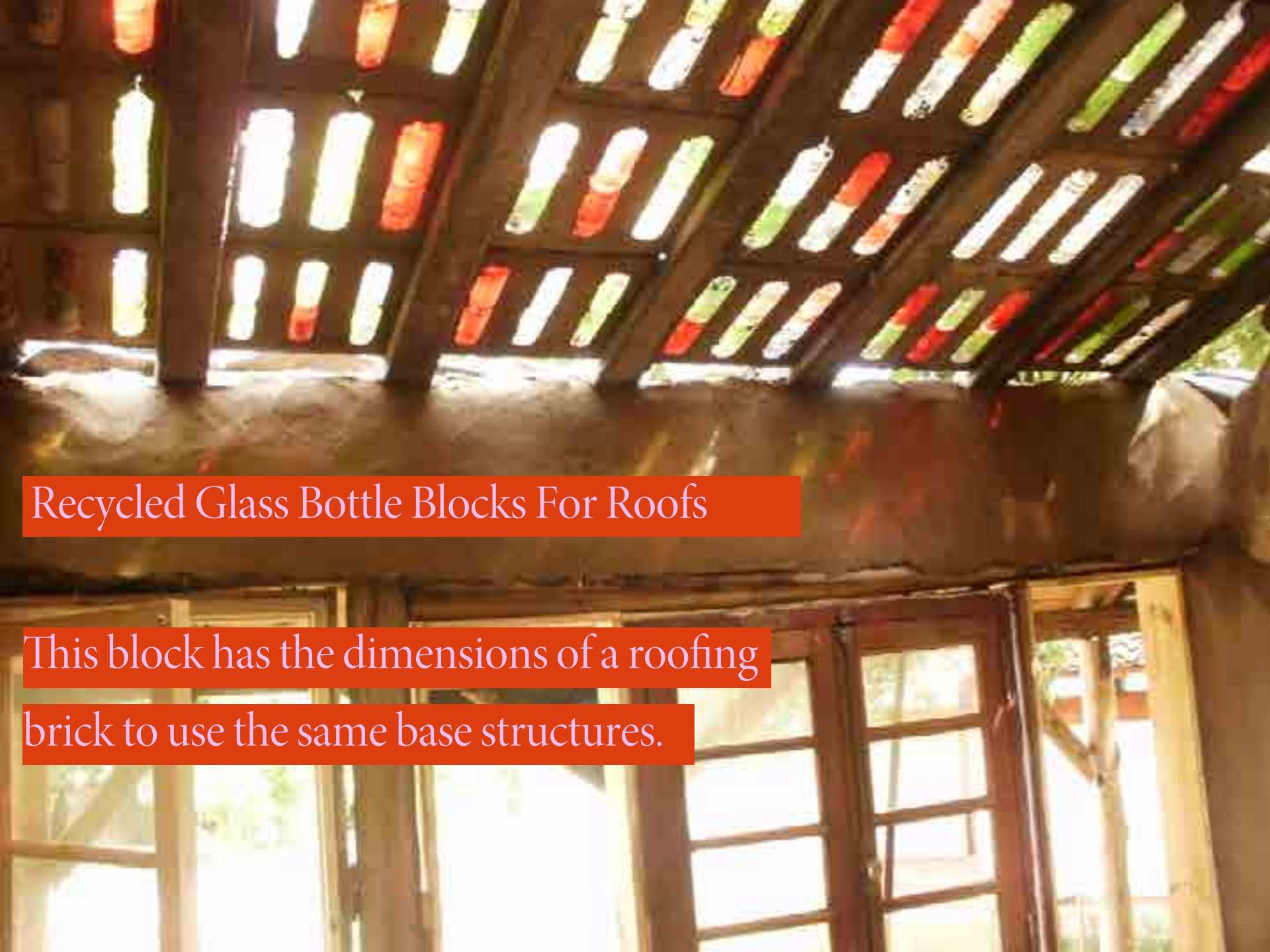


Recycled Glass Bottle Blocks For Roofs

With different developments of recycled materials, an attempt is also made to insert them into works of conventional architecture



Recycled Glass Bottle Blocks For Roofs



Recycled Glass Bottle Blocks For Roofs

This block has the dimensions of a roofing brick to use the same base structures.



Srbm System (Self-supporting Recycled Bottle Module)



Srbm System (Self-supporting Recycled Bottle Module)

The bulk sale of material for recycling is done in pressed bales. By changing the scale of these bundles, but using the same technique as in the recyclers' cooperative, a piece is generated that serves as a masonry for architectural works.



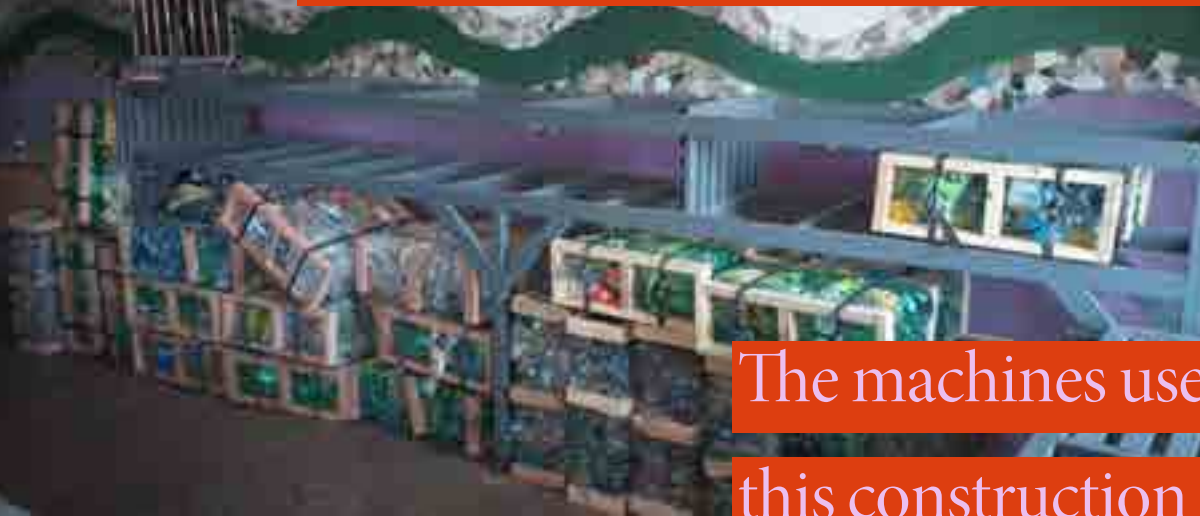
Srbm System (Self-supporting Recycled Bottle Module)

Srbm System (Self-supporting Recycled Bottle Module)



This free-use technique makes it possible to generate an extra production unit in the cooperatives and insert the workers into an industrialized production cycle.

Srbm System (Self-supporting Recycled Bottle Module)



The machines used for the production of this construction system are patent-free and can be used with or without electricity.





Srbm System (Self-supporting Recycled Bottle Module)

Srbm System (Self-supporting Recycled Bottle Module)



In order for this system to be used in architecture for social housing, it had to be tested in academically approved laboratories, complying with all seismic resistance and construction quality standards.





Srbm System (Self-supporting Recycled Bottle Module)

Srbm System (Self-supporting Recycled Bottle Module)



This free-use technology was replicated in other regions of the country, and technology transfer was done through a training cycle with practical workshops, which trained different communities for self-construction.